

The Significance of Internal Control in Business Management and the Application of Advanced AI in AGI, ASI, and UBI Eras

Bing Chen*

Shanghai Maritime University, Shanghai, China, CPA, CMA.

Corresponding Author: Bing Chen, Shanghai Maritime University, Shanghai, China, CPA, CMA.

Received: 📅 2025 Jan 01

Accepted: 📅 2025 Jan 20

Published: 📅 2025 Jan 30

Abstract

This paper explores the critical role of internal control (IC) in the management of enterprises and organizations, emphasizing its importance for sustainable growth and operational efficiency. It further investigates the potential of advanced artificial intelligence (AI) technologies, such as Artificial General Intelligence (AGI), Artificial Super Intelligence (ASI), and Universal Basic Income (UBI) related systems, in enhancing internal control mechanisms. The paper provides a comprehensive analysis of how AI can be integrated into internal control to improve efficiency, execution, and governance effectiveness, supported by practical case studies and theoretical frameworks from recent academic research.

Keywords: Internal Control, Business Management, Artificial General Intelligence (AGI), Artificial Super Intelligence (ASI), Universal Basic Income (UBI), Advanced AI, Efficiency, Governance Effectiveness, Operational Efficiency, Corporate Governance

1. Introduction

In today's rapidly evolving business landscape, enterprises and organizations are confronted with an unprecedented array of challenges and opportunities. The complexity of global markets, regulatory environments, and technological advancements has necessitated a reevaluation of traditional management practices [1]. Among these practices, internal control (IC) stands out as a critical component for ensuring the stability, efficiency, and growth of businesses. As humanity stands on the cusp of an interstellar age, propelled by advancements in quantum computing, artificial intelligence (AI), and space exploration, the disciplines of accounting and financial management face unprecedented transformations. This transition highlights the critical role of internal control (IC) in adapting to new economic, social, and technological paradigms [2]. This paper aims to delve into

the pivotal role of internal control within the management framework of enterprises and organizations, elucidating its significance for sustainable development and operational excellence. Furthermore, the paper will explore the burgeoning field of artificial intelligence (AI), particularly in the context of Artificial General Intelligence (AGI), Artificial Super Intelligence (ASI), and the implications of Universal Basic Income (UBI) on business operations. The integration of AI into internal control systems promises to revolutionize the way businesses manage risks, optimize processes, and enhance governance [3]. This paper will provide a comprehensive analysis of this integration, supported by theoretical frameworks and practical case studies, to demonstrate how AI can be harnessed to fortify internal control mechanisms and drive organizational success.

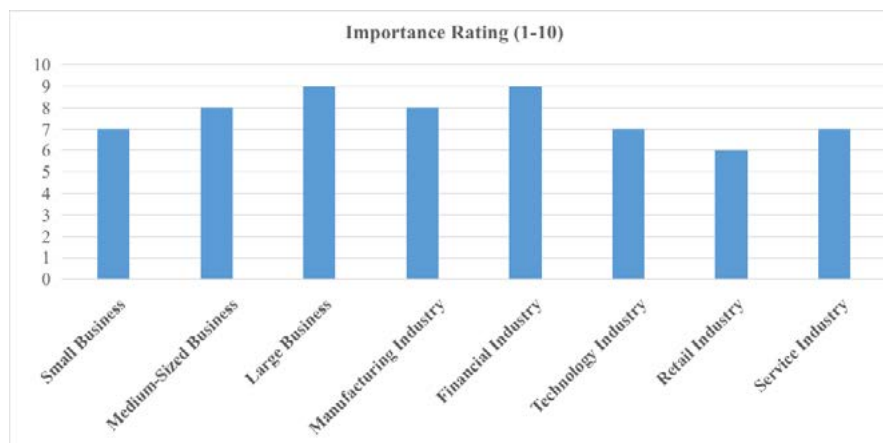


Figure 1: A Bar Chart Depicting the Importance Rating (1-10) of Internal Control Across Different Business Sizes and Industries

2. The Importance of Internal Control in Business Management

2.1. Definition and Objectives

Internal control is a system of policies, procedures, and practices designed to provide reasonable assurance that an organization's objectives are achieved. It encompasses a wide range of activities, from the most basic operational tasks to complex financial and compliance processes. The primary objectives of internal control are to ensure the effectiveness and efficiency of operations, the reliability of financial reporting, and compliance with applicable laws and regulations. The COSO (Committee of Sponsoring Organizations of the Treadway Commission) framework is widely recognized as the authoritative guide for internal control systems, providing a structured approach to achieving these objectives through five interrelated components: control environment, risk assessment, control

activities, information and communication, and monitoring activities.

2.2. Operational Efficiency

One of the key benefits of a robust internal control system is the enhancement of operational efficiency. By establishing clear procedures and responsibilities, internal control ensures that tasks are performed consistently and effectively [4]. For example, in a manufacturing environment, internal controls can dictate the quality checks at various stages of production, ensuring that only products meeting the specified standards are released to the market. This not only improves customer satisfaction but also reduces the costs associated with rework and waste. Moreover, internal control systems can streamline processes by eliminating redundant steps and identifying bottlenecks, thereby accelerating the flow of goods and services through the organization.

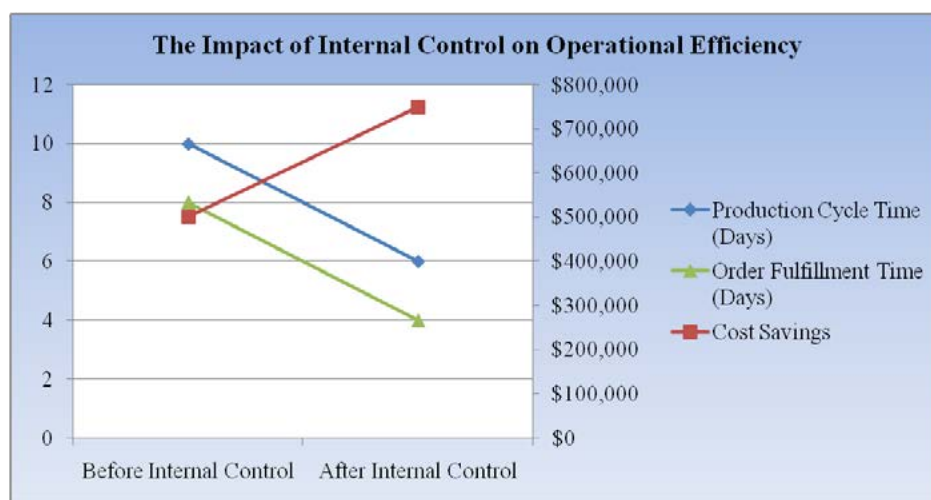


Figure 2: Line Graph Showing the Improvement in Operational Efficiency (e.g., Production Cycle Time, Cost Savings) Before and After Implementing Internal Control

2.3. Risk Management

Risk is an inherent part of any business endeavor, and internal control plays a crucial role in identifying, assessing, and mitigating these risks. Through systematic risk assessment procedures, organizations can anticipate potential threats and develop strategies to address them. For instance, in the financial sector, internal controls are vital for detecting and preventing fraud, ensuring the integrity of financial transactions, and managing credit risks. By maintaining a strong internal control environment, businesses can minimize the likelihood of adverse events and their impact on the organization's financial health and reputation.

2.4. Compliance and Governance

Compliance with laws and regulations is non-negotiable for businesses operating in any jurisdiction. Internal control systems are instrumental in ensuring that organizations adhere to these requirements. They provide a framework for monitoring and reporting on compliance activities, enabling businesses to demonstrate their commitment to ethical and legal standards. Sound corporate governance hinges on transparency, and accounting is the primary mechanism for achieving it. Audited financial statements provide an objective snapshot of a company's operations

to shareholders, creditors, and other stakeholders, holding management accountable for their stewardship [5]. In the context of corporate governance, internal control supports the board of directors and senior management in fulfilling their fiduciary duties. It helps to establish a culture of transparency and accountability, where decisions are made in the best interests of the organization and its stakeholders [6].

3. The Evolution of AI and Its Impact on Business

3.1. AI Technologies

The field of artificial intelligence has witnessed remarkable advancements in recent years, with AGI, ASI, and UBI emerging as key concepts that will shape the future of business. AGI refers to a machine's ability to understand, learn, and apply knowledge across a broad range of tasks at a human level. ASI, on the other hand, represents a further evolution, where machines surpass human intelligence in virtually all domains. UBI, while not a form of AI, is a social policy concept that has implications for the workforce and business operations, as it may influence labor markets and consumer behavior. These technologies have the potential to transform business processes, from automating routine tasks to providing sophisticated decision support [7].

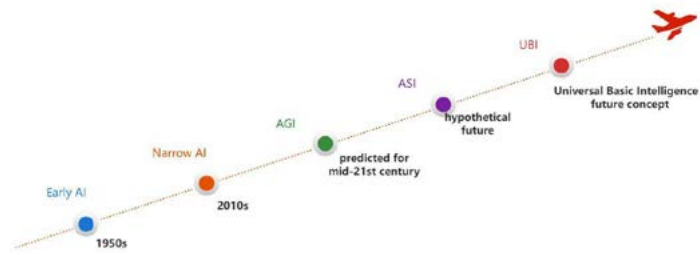


Figure 3: A Timeline Showing the Evolution of AI Technologies (e.g., AGI, ASI, UBI) and Future Predictions on the Historical Development and Future Trends of AI Technologies

3.2. In Business

Currently, AI is being employed in various business functions to enhance productivity and decision-making. In marketing, AI algorithms analyze consumer data to predict buying patterns and personalize marketing campaigns. In customer service, chatbots powered by AI provide instant responses

to customer inquiries, improving customer satisfaction. In supply chain management, AI optimizes logistics and inventory levels, reducing costs and improving delivery times [8]. As AI technologies continue to mature, their application in business is expected to expand, offering new opportunities for innovation and competitive advantage [4].

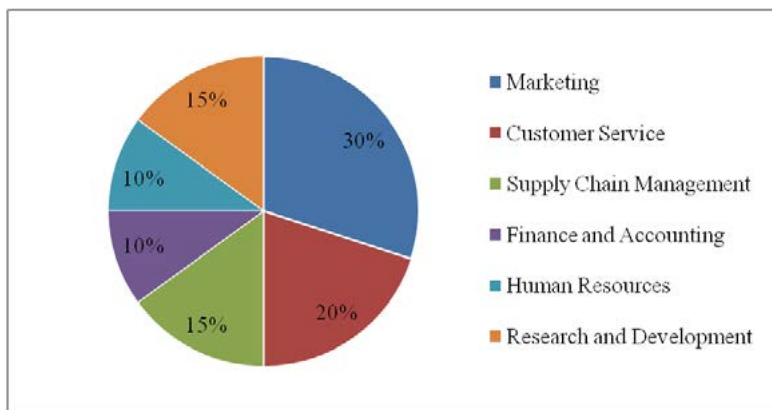


Figure 4: A Pie Chart Illustrating the Distribution of AI Applications Across Various Business Functions

4. AI in Internal Control: Theoretical Frameworks

4.1. Resource-Based View (RBV)

The Resource-Based View (RBV) posits that organizations can gain a competitive advantage by leveraging their unique resources and capabilities. In the context of internal control, AI can be considered a strategic resource that, when effectively deployed, can enhance the organization's ability to manage risks, improve operational efficiency, and

ensure compliance [9]. By investing in AI technologies, businesses can develop capabilities that are valuable, rare, inimitable, and non-substitutable (VRIN), thereby creating a sustainable competitive edge. For example, an organization that uses AI for advanced fraud detection may be able to prevent significant financial losses, which not only protects its financial health but also enhances its reputation in the market [10].

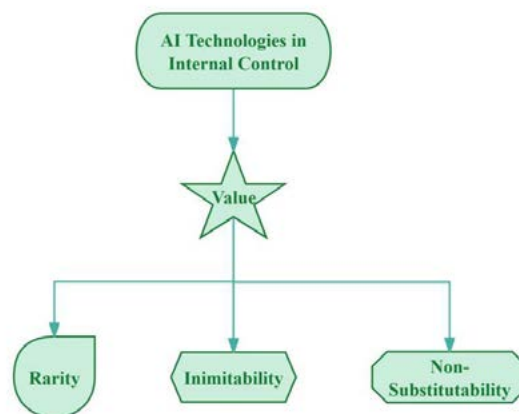


Figure 5: The Following Flowchart Depicts How Businesses Can Enhance the Value, Rarity, Inimitability, And Non-Substitutability (VRIN) Of Their Resources Through Ai Technologies

4.2. Task-Technology Fit (TTF)

The Task-Technology Fit (TTF) theory suggests that the effectiveness of a technology implementation depends on the alignment between the technology's capabilities and the requirements of the task. In internal control, this means that AI systems should be designed and configured to match the specific control activities and processes within the

organization. For instance, if the task is to monitor financial transactions for fraud, the AI system should be capable of analyzing large volumes of data, identifying patterns, and flagging suspicious activities. By ensuring a good fit between AI technology and internal control tasks, organizations can maximize the benefits of AI while minimizing the risks of technology misalignment [11].

Internal Control Task	Machine Learning (ML)	Natural Language Processing (NLP)	Robotic Process Automation (RPA)	Data Analytics	Anomaly Detection
Risk Assessment	High	Medium	Medium	High	High
Auditing	High	High	Medium	High	Medium
Transaction Monitoring	High	Low	High	High	High
Compliance Checking	Medium	High	High	Medium	Medium
Fraud Detection	High	Medium	Medium	Medium	High

Figure 6: A Matrix Illustrating the Fit Between Various Internal Control Tasks and Ai Technologies

4.3. COSO Framework

The COSO framework provides a comprehensive and flexible structure for implementing internal control systems. It can be adapted to incorporate AI technologies, ensuring that the benefits of AI are realized within a well-defined control environment. The five components of the COSO framework can be enhanced by AI in the following ways [12-14].

- **Control Environment:** AI can support the development of a strong control culture by providing data-driven insights into employee behavior and performance.
- **Risk Assessment:** AI algorithms can analyze vast amounts of data to identify emerging risks more quickly and accurately than traditional methods.
- **Control Activities:** AI can automate and enhance control activities, such as reconciliations, approvals, and monitoring, reducing the risk of human error.
- **Information and Communication:** AI can facilitate the timely and accurate flow of information within the organization, improving communication and decision-making.
- **Monitoring Activities:** AI can continuously monitor

internal control systems, providing real-time feedback and alerts on the effectiveness of controls.

5. Practical Applications of AI in Internal Control

5.1. Automation of Routine Tasks

One of the most immediate and tangible benefits of AI in internal control is the automation of routine and repetitive tasks. These tasks, which often consume a significant amount of time and effort from employees, can be performed more efficiently and accurately by AI systems. For example, data entry tasks can be automated using optical character recognition (OCR) and machine learning algorithms, reducing the risk of transcription errors. Approval processes, such as purchase orders and expense reports, can be streamlined through AI-powered workflow systems that automatically route documents to the appropriate approvers based on predefined rules. Financial reconciliations, a critical control activity, can be enhanced by AI algorithms that compare data from different sources and identify discrepancies in real-time, ensuring the accuracy and integrity of financial statements [15].

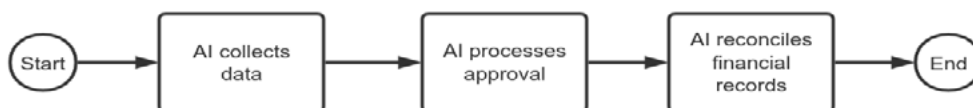


Figure 7: A Flowchart Showing How AI Systems Automate Routine Tasks Such as Data Entry, Approval Processes, and Financial Reconciliations

5.2. Enhanced Decision Support

AI has the potential to transform decision-making within organizations by providing managers with timely and actionable insights. Through advanced analytics and predictive modeling, AI systems can process large volumes

of structured and unstructured data to identify trends, patterns, and correlations that may not be apparent to human analysts. AI-driven Activity-Based Costing (ABC) systems have been instrumental in enhancing cost management practices by providing real-time cost insights and predictive

analytics. These systems automate data processing, identify cost drivers, and optimize resource allocation, supported by advanced algorithmic approaches. For example, a logistics firm adopted an AI-powered ABC system to address regional cost variances in delivery operations, reducing cost variances by 25% through the use of clustering algorithms and reinforcement learning for dynamic cost adjustments [16]. For example, in the context of strategic planning, AI

can analyze market data, customer feedback, and internal performance metrics to generate scenarios and forecasts that help managers make informed decisions about product development, market expansion, and resource allocation. In risk management, AI can simulate various risk scenarios and quantify their potential impact on the organization, enabling managers to develop more effective risk mitigation strategies [17].

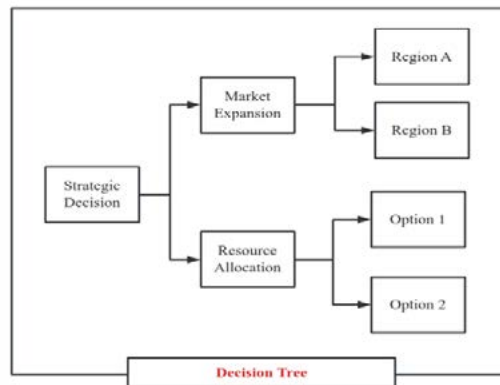


Figure 8: A Decision Tree Diagram Showing how AI Systems Support Strategic Planning, Market Expansion, and Resource Allocation Through Data Analysis and Predictive Models

5.3. Real-Time Monitoring and Alerts

A critical aspect of internal control is the ability to monitor activities and detect anomalies in real-time. AI systems, with their capacity for continuous learning and pattern recognition, are well-suited for this task [18-21]. By analyzing data streams from various sources, such as financial transactions, operational logs, and employee activities, AI algorithms can identify deviations from established norms and trigger alerts for further investigation [22].

internal control systems to optimize inventory management and supply chain operations. By integrating machine learning algorithms, the company was able to predict demand patterns more accurately, reducing inventory levels by 20% while maintaining high service levels. The AI system also monitored supplier performance in real-time, identifying potential delays and quality issues, allowing the company to take proactive measures to mitigate risks. This not only improved operational efficiency but also enhanced the company's reputation among customers.

6. Case Studies

6.1. Case Study 1: Manufacturing Company - Inventory Management and Supply Chain Optimization

A leading manufacturing company implemented AI-driven

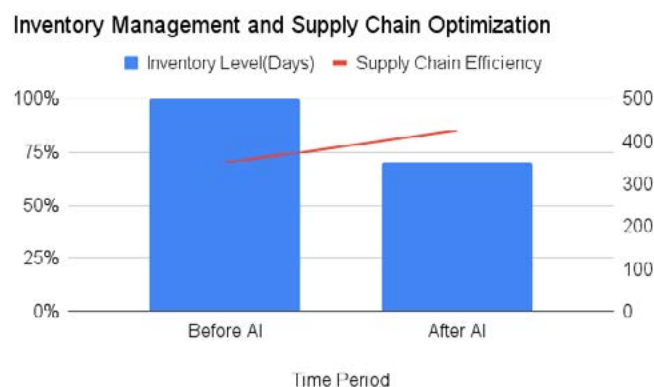


Figure 9: A Bar Chart Showing Inventory Levels and Supply Chain Efficiency Before and After Implementing an AI-Driven Internal Control System

6.2. Case Study 2: Financial Institution - Fraud Detection and Compliance Monitoring

A major financial institution leveraged AI technologies to enhance its fraud detection and compliance monitoring capabilities. Using advanced analytics and machine learning, the institution was able to identify fraudulent transactions

in real-time, reducing financial losses by 30%. The AI system also automated the process of regulatory compliance, ensuring that the institution met all legal requirements without manual intervention. This not only saved significant resources but also improved the institution's compliance posture and reduced the risk of regulatory penalties.

6.3. Case Study 3: Technology Firm - Employee Performance Evaluation and Resource Allocation

A technology firm employed AI to optimize employee performance evaluation and resource allocation. By analyzing employee data, including performance metrics,

project outcomes, and feedback, the AI system provided personalized performance evaluations and recommendations for resource allocation. This led to a 25% improvement in employee productivity and a more efficient use of resources, supporting the firm's growth and innovation efforts.

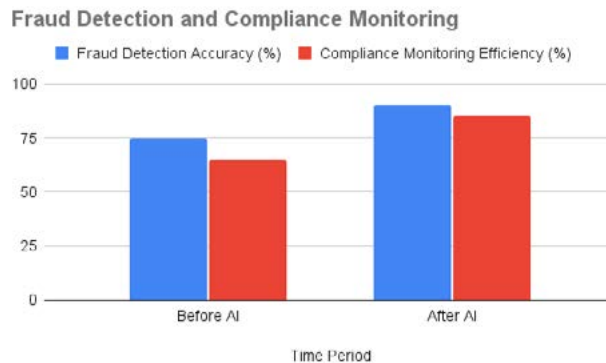


Figure 10: A line graph depicting the improvement in fraud detection accuracy and compliance monitoring efficiency before and after implementing AI technologies

7. Challenges and Limitations

7.1. Data Quality and Integrity

The effectiveness of AI in internal control systems is highly dependent on the quality and integrity of the data used. Poor data quality can lead to inaccurate predictions and

false alarms, undermining the reliability of the system. Organizations must invest in data governance and quality control measures to ensure that the data feeding into AI systems is accurate and reliable [23].

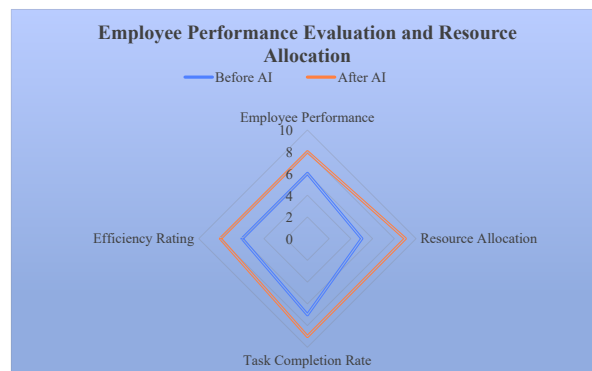


Figure 11: The Following Radar Chart Illustrates Improvements in Employee Performance and Resource Allocation Efficiency Before and After Implementing an AI System

7.2 Skill Shortage

Implementing and managing AI systems requires specialized skills that are currently in short supply. Organizations may face challenges in finding and retaining talent with

the necessary expertise in AI, data science, and internal control. This skill shortage can slow down the adoption and implementation of AI technologies, hindering the potential benefits.

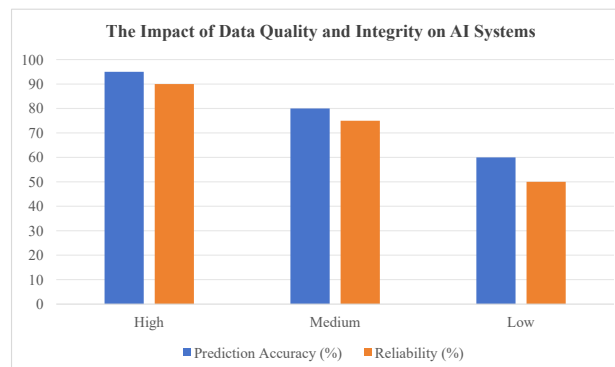


Figure 12: A Bar Chart Showing the Prediction Accuracy and Reliability of AI Systems at Different Levels of Data Quality

7.3. Ethical and Legal Issues

The use of AI in internal control raises several ethical and legal concerns. For example, the potential for bias in AI algorithms can lead to unfair treatment of employees or customers. Additionally, the use of AI for surveillance and monitoring may raise privacy concerns. Organizations must navigate these ethical and legal issues carefully, ensuring that their use of AI aligns with ethical standards and legal requirements.

The integration of AI in tax administration is a critical component of internal control, as it streamlines processes

from data collection to fraud detection and compliance checks. As China considers tax reforms to align with global economic trends and advance social civilization, the adoption of AI in tax systems can significantly enhance compliance and efficiency [24-25]. For example, AI can automate the collection and analysis of vast tax-related data, identify patterns and anomalies, detect fraudulent activities, and perform automated compliance checks. This not only improves the efficiency of tax management but also strengthens the tax system's ability to detect and prevent fraud, thereby reinforcing the internal control mechanisms within tax administration [26].

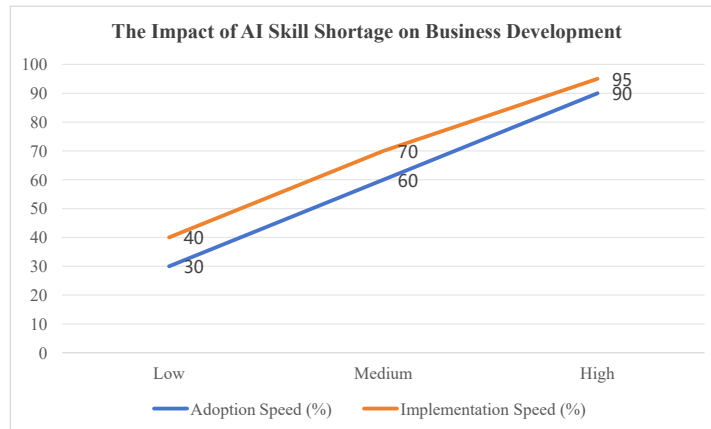


Figure 13: A Line Graph Showing the Adoption and Implementation Speed of AI Technologies at Different Skill Levels

8. Future Directions

8.1. Integration with Other Technologies

The future of AI in internal control lies in its integration with other emerging technologies such as blockchain and the Internet of Things (IoT). Blockchain can provide a secure and transparent ledger for transactions, enhancing the integrity

of data used by AI systems [27]. IoT devices can provide real-time data on physical assets and processes, enabling more granular and timely control. This integration will create a more robust and comprehensive internal control environment.

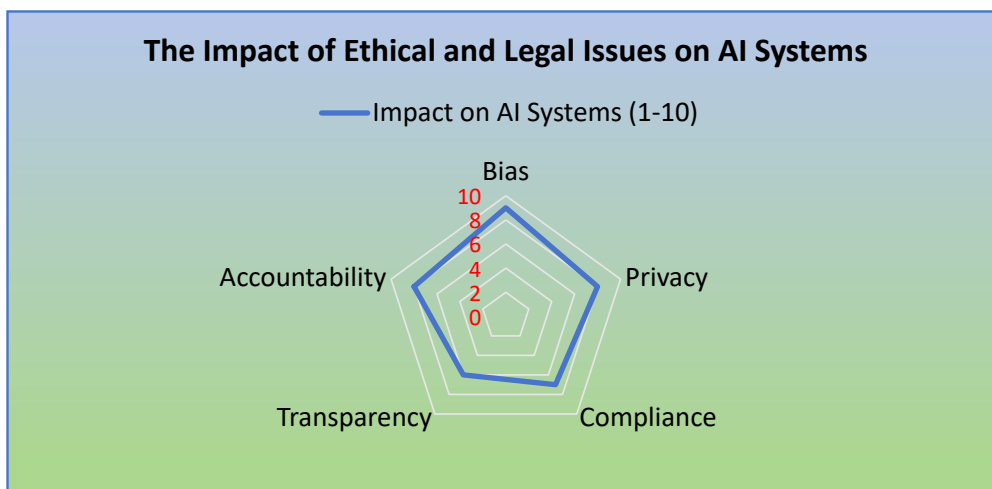


Figure 14: A Radar Chart Displaying the Impact of Various Ethical and Legal Issues (e.g., Bias, Privacy, Compliance) on AI Systems

8.2. Continuous Learning and Adaptation

AI systems must be designed to learn and adapt continuously to changing business environments. This requires the development of self-learning algorithms that can update

their models based on new data and feedback [28]. Continuous learning will ensure that AI systems remain effective and relevant, adapting to new risks and challenges as they emerge.

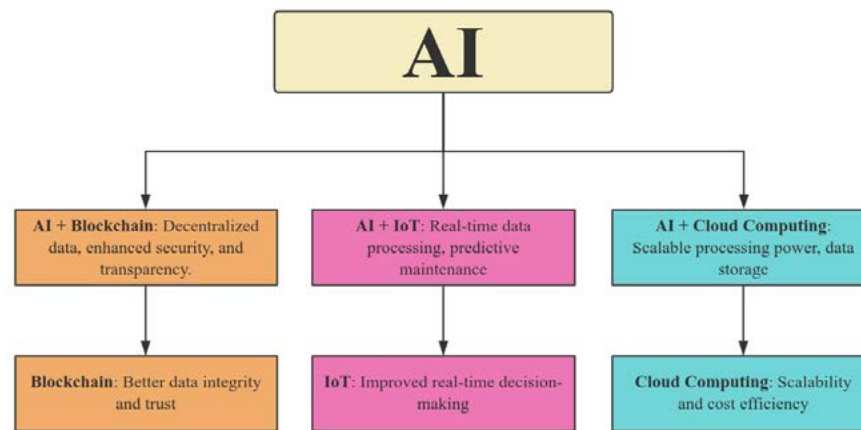


Figure 15: The Following Flowchart Illustrates the Integration Paths and Effects of AI With Blockchain, IoT, and Other Technologies

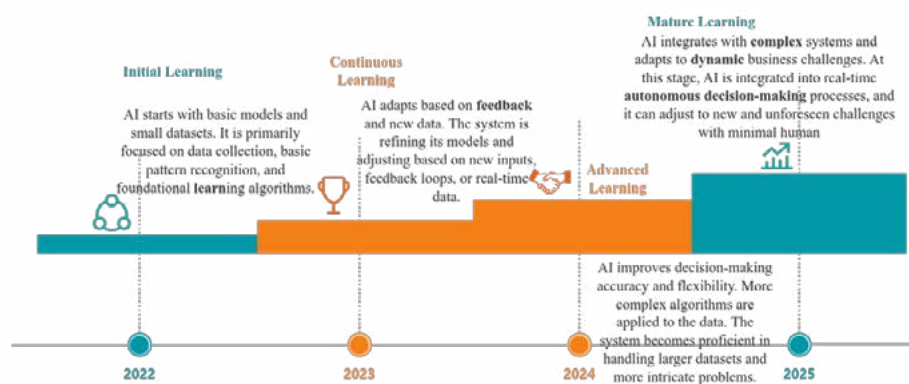


Figure 16: A Timeline Showing How AI Systems Continuously Learn and Adapt to New Business Environments and Challenges

8.3. Global Standards and Regulations

As AI becomes more prevalent in internal control, the need for global standards and regulations will increase. These standards will help ensure that AI systems are used responsibly and ethically, protecting the interests of all stakeholders. Organizations should actively participate in the development of these standards and ensure that their AI systems comply with them.

9. Conclusion

Summary

This paper has explored the critical role of internal control in business management and the potential of AI technologies, particularly AGI, ASI, and UBI, in enhancing internal control systems. Through theoretical frameworks and practical case studies, the paper has demonstrated how AI can be integrated into internal control to improve efficiency, execution, and governance effectiveness. The paper has also discussed the challenges and limitations of implementing AI in internal control, emphasizing the need for data quality, skill development, and ethical considerations.

Implications

The implications of this research are significant for both businesses and policymakers. Businesses should invest in AI technologies to enhance their internal control systems,

ensuring that they remain competitive and compliant in a rapidly changing business environment. Policymakers should develop and enforce standards and regulations to guide the responsible use of AI in internal control, protecting the interests of all stakeholders.

Call to Action

This paper calls for further research and practical implementation of AI in internal control systems. Organizations should explore the potential of AI technologies and develop strategies to integrate them into their existing internal control frameworks. By doing so, they can leverage the power of AI to drive operational excellence and sustainable growth.

References

- Chen, B. (2025). The Role of Accounting and Financial Management in Humanity's Transition to the Interstellar Era.
- Gan Lu. On how to improve internal control management by innovative means at the present stage. 2022-09-20
- Zhongyin Law Firm. Lawyer's Perspective on Corporate Internal Control and Compliance Innovation - Taking the Application of Artificial Intelligence and Other Technologies as the Entry Point. 2024-03-06
- NetEase, Application and Practice of Artificial

- Intelligence in Compliance Management - Financial Supervision. Internal Control Compliance Digitalization. 2024-12-24
5. On the Innovation and Development of Complex Adaptive Systems and Enterprise Management Research. *Journal of Modern Business Administration*. 2022-09-20
 6. Modern Green Logistics Management and Its Optimization Path Research. *Journal of Modern Business Administration*". 2022-09-20
 7. New Situation Enterprise Economic Management Innovation Discussion. *Journal of Modern Business Administration*. 2022-09-20
 8. On the Innovation and Development of Complex Adaptive Systems and Enterprise Management Research. *Journal of Modern Business Administration*. 2022
 9. Przegalinska, A., Triantoro, T., Kovbasiuk, A., Ciechanowski, L., Freeman, R. B., & Sowa, K. (2025). Collaborative AI in the workplace: Enhancing organizational performance through resource-based and task-technology fit perspectives. *International Journal of Information Management*, 81, 102853.
 10. Monteiro, A., Cepêda, C., Da Silva, A. C. F., & Vale, J. (2023). The relationship between ai adoption intensity and internal control system and accounting information quality. *Systems*, 11(11), 536.
 11. INTERNAL CONTROL AND THE TRANSFORMATION OF ENTITIES KEY ACTIONS SUMMARY. 2022-04-01. *ACCA Global*.
 12. Akhmetshin, E. M., Vasilev, V. L., Mironov, D. S., Zatsarinnaya, E. I., Romanova, M. V., & Yumashev, A. V. (2018). *Internal control system in enterprise management: Analysis and interaction matrices*.
 13. Wassie, F. A., & Lakatos, L. P. (2024). Artificial intelligence and the future of the internal audit function. *Humanities and Social Sciences Communications*, 11(1), 1-13.
 14. Evaluating the impact of internal control systems on organizational effectiveness. *LBS Journal of Management & Research*. 2024-12-29.
 15. Chen, B. (2025). *The Pivotal Role of Accounting in Civilizational Progress and the Age of Advanced AI: A Unified Perspective*.
 16. Chen, B. (2025). *Leveraging Advanced AI in Activity-Based Costing (ABC) for Enhanced Cost Management*.
 17. Hu, Z., Lei, F., Fan, Y., Ke, Z., Shi, G., & Li, Z. (2024). Research on financial multi-asset portfolio risk prediction model based on convolutional neural networks and image processing. *arXiv preprint arXiv:2412.03618*.
 18. Chen, B. (2025). The Imperative Need for Tax Reform in China and Its Impact on Advancing Social Civilization.
 19. Ke, Z., Zhou, S., Zhou, Y., Chang, C. H., & Zhang, R. (2025). Detection of AI Deepfake and Fraud in Online Payments Using GAN-Based Models. *arXiv preprint arXiv:2501.07033*.
 20. Yu, Q., Ke, Z., Xiong, G., Cheng, Y., & Guo, X. (2025). Identifying Money Laundering Risks in Digital Asset Transactions Based on AI Algorithms.
 21. Li, P., Abouelenien, M., Mihalcea, R., Ding, Z., Yang, Q., & Zhou, Y. (2024, May). Deception detection from linguistic and physiological data streams using bimodal convolutional neural networks. In *2024 5th International Conference on Information Science, Parallel and Distributed Systems (ISPDS)* (pp. 263-267). *IEEE*.
 22. Ke, Z., & Yin, Y. (2024). Tail Risk Alert Based on Conditional Autoregressive VaR by Regression Quantiles and Machine Learning Algorithms. *arXiv preprint arXiv:2412.06193*.
 23. Liu, A., & Chen, C. (2025). From real estate financialization to decentralization: A comparative review of REITs and blockchain-based tokenization. *Geoforum*, 159, 104193.
 24. Chen, Y., Liu, L., & Fang, L. (2024). An Enhanced Credit Risk Evaluation by Incorporating Related Party Transaction in Blockchain Firms of China. *Mathematics*, 12(17), 2673.
 25. Li, P., Lin, Y., & Schultz-Fellenz, E. (2024, May). Contextual hourglass network for semantic segmentation of high-resolution aerial imagery. In *2024 5th International Conference on Electronic Communication and Artificial Intelligence (ICECAI)* (pp. 15-18). *IEEE*.
 26. Ke, Z., Xu, J., Zhang, Z., Cheng, Y., & Wu, W. (2024). A Consolidated Volatility Prediction with Back Propagation Neural Network and Genetic Algorithm. *arXiv preprint arXiv:2412.07223*.
 27. Yu, Q., Xu, Z., & Ke, Z. (2024, November). Deep Learning for Cross-Border Transaction Anomaly Detection in Anti-Money Laundering Systems. In *2024 6th International Conference on Machine Learning, Big Data and Business Intelligence (MLBDBI)* (pp. 244-248). *IEEE*.
 28. Hu, Z., Yu, R., Zhang, Z., Zheng, H., Liu, Q., & Zhou, Y. (2024). Developing Cryptocurrency Trading Strategy Based on Autoencoder-CNN-GANs Algorithms. *arXiv preprint arXiv:2412.18202*.